

Moselle Avenue N22

Per Calendar Month £1,500
Per Calendar Month

 1 BEDROOMS

 1 BATHROOMS

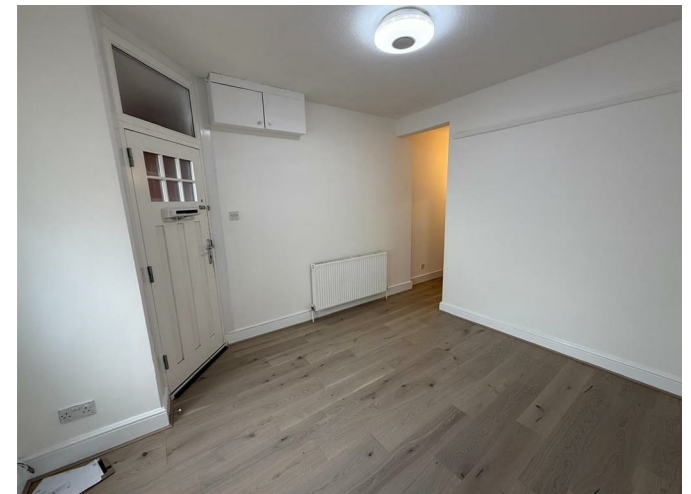
 1 RECEPTIONS

Details

- ONE DOUBLE BEDROOM
- GROUND FLOOR FLAT
- LARGE LIVING RECEPTION AREA
- SPACIOUS KITCHEN
- BATHROOM
- GAS CENTRAL HEATING AND DOUBLE GLAZING
- SMALL PRIVATE REAR GARDEN
- PERMIT PARKING
- AVAILABLE NOW!

EPC RATING: 61 (D)
COUNCIL TAX: A

BREENS





BREENS

Contact Us

0208 804 8989

enfieldwash@wjmeade.net

557-559 Hertford Road, Enfield, EN3 5UQ

All sizes are approximate. The Agent has not tested any apparatus, equipment, fixtures and fittings, or services and so cannot verify that they are in working order or fit for the purpose. A buyer is advised to obtain verification from their Solicitors or Surveyor. Photographs are for illustration purposes only and may depict items, which are not for sale or included in the sale price. References to tenure of a property are based upon Information supplied by the vendor. The agent has not had sight of the title documents, a buyer is advised to obtain verification from their solicitor.

Money Laundering Regulations 2003: Intending purchasers will be asked to produce identification, documentation at a later stage and we would ask for your co-operation in order that there will be no delay in agreeing the sale. These particulars are intended to give a fair description of the property only and are in no way guaranteed, nor do of any contract. They are issued on the express condition that all negotiations are conducted through Breens Estate Agents. All subject to contract and to being unsold.